



Imcon Internet Backpack

QUICKSTART GUIDE

INTRO

Please read these instructions carefully before operating the Imcon Internet Backpack.

GETTING STARTED

1. Identify all components included in your Imcon Internet Backpack. (See figure 1)

2. Power on the smartphone.

APP & FEATURES

The Imcon Wi-Fi connects you to 'Internet or Intranet' via the router.

The Satellite apps connect you to 'Internet or Intranet' and Imcon services through the IsatHub control app. The voice app let you send and receive voice calls.

The GoTenna app will connect you to the Mesh Network.

Once you choose your connection, the Imcon Mobile App will provide you access to Imcon services and access control.

To establish a connection between the smartphone and the Imcon Internet Backpack:

3. Launch the application or features of your choice. (see figure 2)

4. Power on other components, in figure 1, you desire to connect with your smartphone, based on your choice in step 3.



Includes International Power Adapters
Includes prepaid introduction LTE
Includes Satellite SIM cards
Backpack and components are water resistant

Figure 1: Imcon Internet Backpack Components



Figure 2: Other useful applications / features

Connections Features

CONNECTIONS TYPE

There are many connections features available with the Imcon backpack depending on what type of connection the user needs and can reach. (see Figure 3)

INFO

To access the Wi-Fi and network go to the next step. To access the satellite network go to step 6. To access the Mesh network go to step 7.

5. WIFI

The router is preconfigured to work with the backpack. (see figure 4)

- 5.a. Power on the router
- 5.b. Go to settings on your smartphone to activate your Wi-Fi.
- 5.c. Select the backpack Wi-Fi name (SSID) and enter the Wi-Fi password.

2G/3G/4G/TLE

Note: To use the 2G/3G/4G/TLE networks you must have an activated SIM Card with enough credit for use.

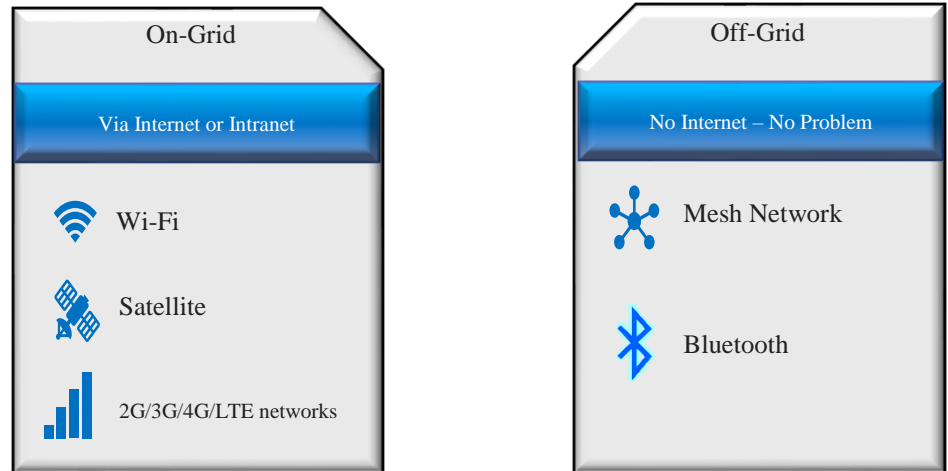


Figure 3: Imcon Internet Backpack Connections

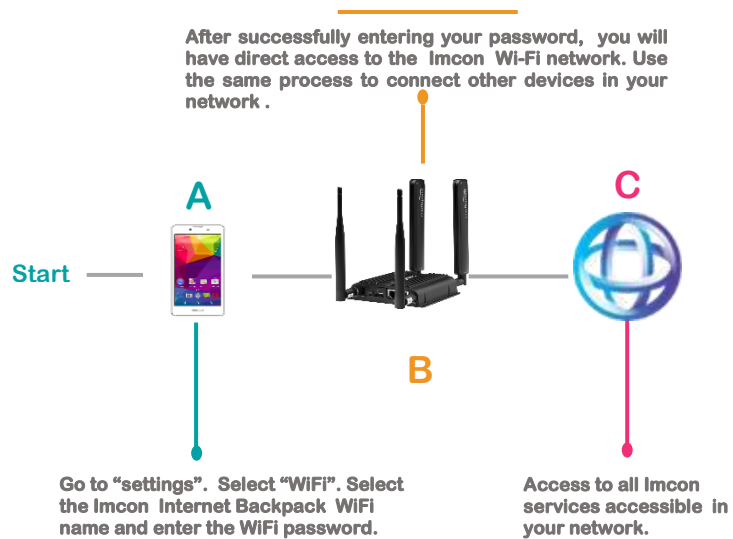


Figure 4: Access to the imcon Wi-Fi network

Connection Features (continued)

6. SATELLITE

You must have an activated Satellite SIM Card with enough credit for use.

- 6.a. Press and hold the power button for five (5) seconds. The indicator lights will come on.
- 6.b. Wait for the software to be fully loaded (first time will take longer). It will start flashing when it figures out where it is located.
- 6.c. Tilt it up until both sides of the arrow (up & down) light up.
- 6.d. Turn it around until both sides of the curve arrow show steady lights.
- 6.e. Now that you are ready to get satellite data, go to figure 5 to continue with the process.

7. Mesh Network

Before you go off-grid, remember to fully charge your Mesh Network adapter and download any offline maps you need.

- 7.a. First Time pairing. Make sure Bluetooth is activated on your smartphone.
- 7.b. Turn on adapter.
- 7.c. Pair the smartphone with the Mesh Network adapter via Bluetooth. Once paired, the indicator light will stop flashing.
- 7.d. Click on the goTenna icon on the smartphone screen.
(See figure 6)

At this point your smartphone is connected to the satellite hotspot and trying to connect data through the control app. When prompted, click on "connect data" to be on satellite.

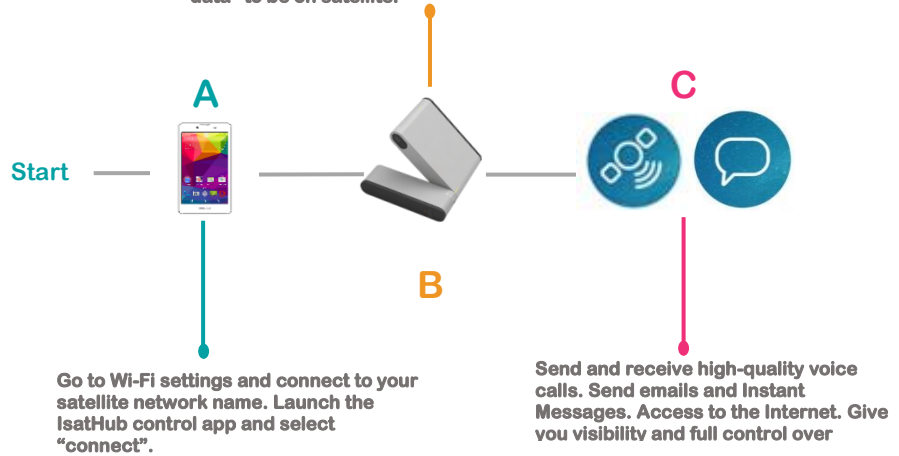


Figure 5: Access to the satellite network

Power on the Mesh network adapter by pressing and holding the power button for ~3 seconds. Release the button. A flashing light will appear notifying that the antenna is on.

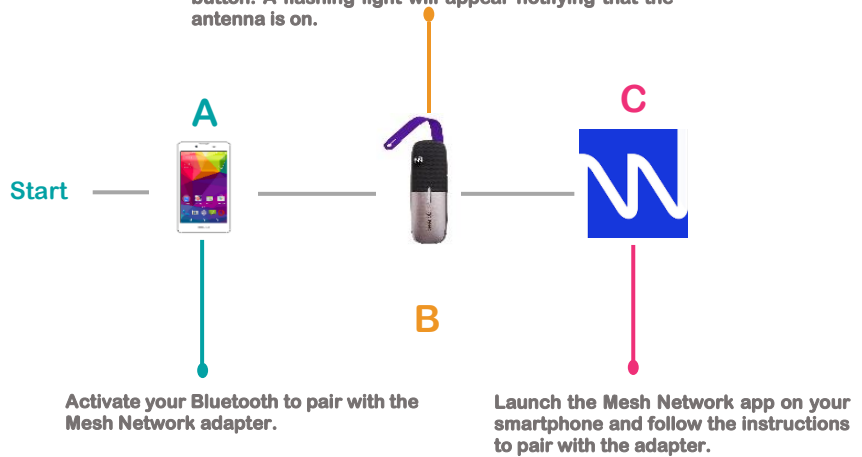


Figure 6: Access to the Mesh network

Service Features and Benefits



Figure 7: Imcon Internet Backpack Services

THE SERVICES

After successfully connected, users will have direct access to various Imcon services depending on the type of connection the user selected and can reach. (See Figure 7)

CUSTOMER SERVICES

For questions related to general information, sales, your purchase, and product warranty, please email us at info@imconintl.com

For technical support, please email us at support@imconintl.com

WARNING

To reduce risk of fire, electric shock or injury, refer to the warning section.

For more information on any of our products or services please visit us on the Web at: www.imconintl.com

USUAL MANUAL

Please refer to the documentation page on our website for more instructions.

WARNING



Product assembly may include small parts. Please make sure you identify all components as per this user guide.



To reduce risk of fire or electric shock, do not expose the Imcon Internet Backpack components to rain or moisture



Do not plug high power consumption devices such as desktops into the Imcon Internet Backpack charger or power supply.



If a plug does not fit your outlet, use the correct adapter that fits your outlet. Contact a qualified electrician to guide you on the right adapter. Do not change a plug in any way.

CUSTOMER SERVICES

- Technical Support
- Installation and Setup
- Maintenance
- Application Support
- Hardware Support
- Guaranteed Warranty



2874 Johnson Ferry Rd, Suite 150
 Marietta, GA 30062
 Phone: 470-210-0760
 Fax: 770-623-9162